

Thank you for choosing MAXHUB product.

Please read carefully and thoroughly this document before using the product. Should you have any questions, please contact technical support.

⚠Safety Warnings

Placement

- (1) Please do NOT place the product on a slope, mount on an unstable stand or an insufficiently robust wall, a table nor a shelf.
- (2) Please do NOT expose the product to direct sunlight or any other heat source.
- (3) Please do NOT put the product near devices that generate strong magnetic fields.
- (4) Please do NOT place the product in a humid environment for it is NOT water-proof. Keep it from water splashes.
- (5) Please do NOT place any other heavy objects on the product.

Power

- (1) Please check the product's operating voltage and frequency matches the local power configuration.
- (2) Please unplug the device during storming or thundering weather.
- (3) Please unplug the power should the product is left unused for long time.
- (4) Please keep the power cable from physical or mechanical damage.
- (5) Please use the MAXHUB cable and do NOT modify it.
- (6) Please make sure the AC is grounded.

Screen

- (1) Do NOT use hard nor sharp objects on the screen other than MAXHUB stylus.
- (2) Please unplug the power before cleaning the product.
- Please clean the screen with a soft, dustless and dry cloth.
- (3) Please do NOT use water or liquid detergent to clean the product.
- (4) Please contact the authorised reseller for thorough cleaning.
- (5) Please do NOT display a high-brightness image on the screen for too long time.

Viewing Distance

The optimal viewing distance is 3-4 times the diagonal length of the screen.

Temperature & Humidity

- (1) Please do NOT put the product near a heater nor a radioactive source.
- (2) If the product is moved from a cold place to a warm one, please unplug the power cable and allow the product to gradually warm up for at least two hours to reduce the moisture.
- (3) Operating temperature of the product is 0°C-40°C, operating humidity is between 0%-90%RH.

Ventilation

Please place the product in a place with adequate ventilation. Leaving at least 10cm-space on the left, right and back, and 20cm-space above the product.

Earphone

It may cause temporary or permanent hearing loss should you listen to the earphone in high volume.
Please turn down the volume before you put on the earphone.

Standby

Pressing on the power button shortly will not shut down the product. It will enter standby mode with only the screen turned off. To shut down the product, press and hold the power button for approximately 3 seconds and confirm the shut down command in the centre of the screen.

Notes for Cleaning

The back panel included a number of heat vents. Please do NOT spray any liquid.

Rocker Switch Status

“I” means on, “O” means off.

Maintenance

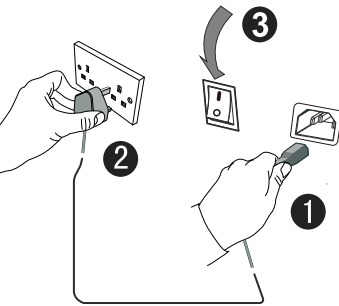
Please contact authorised reseller for maintenance or repairing.

⚠Warranty Exclusions

MAXHUB does not warranty Products that match any one or few of the following descriptions:

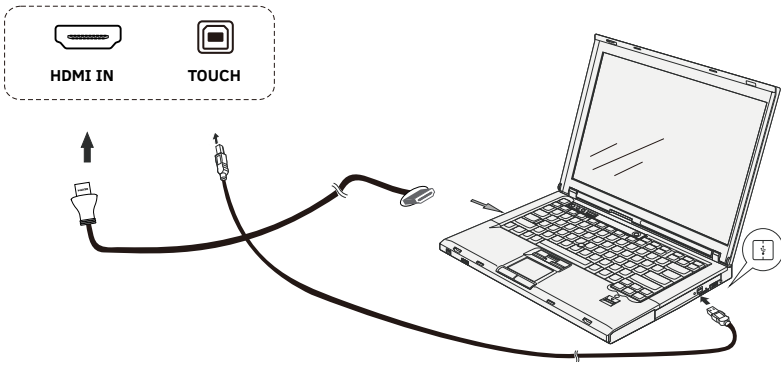
- (1) Product damages caused by violating the user manual.
- (2) Hardware damages caused by improper setup.
- (3) Product damages caused by unauthorised modification or maintenance.
- (4) Product damages caused by using in an unsuitable environment.
- (5) Product damages caused by abnormal external force.
- (6) Product damages caused by natural disasters or other force majeure.
- (7) Damaged Warranty Sticker
- (8) Unable to provide effective purchase certificate

I. Power On/Off



- 1 Plug the power cable into the power socket of the product.
- 2 Plug the power cable to the power supply. Press the power button to boot the product.
- 3 Flip the rocker switch and press on power button to boot the product. The indicator would turn blue.

II. External Touch Connection & Wireless Screen-sharing



There are two ways for connecting with an external device such as a laptop:
(1)Connect the laptop with an HDMI cable, a USB Type A male to USB Type B male cable and an audio cable.
(2)Screen-share with MAXHUB Share application. Get to know more from MAXHUB Share User Manual.

In either way you may set the interactive flat panel as another display.

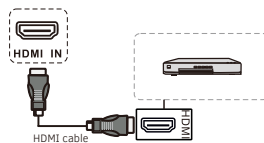
- Display: You may duplicate the displaying contents on the laptop or use the panel as an extended display.
- Sound: You may also choose to play sound from the interactive flat panel.
- Touch Control: You may achieve touch control on the panel once the above-mentioned USB cable is connected or finished relevant settings while using MAXHUB Share App.

III. Button & Port Description

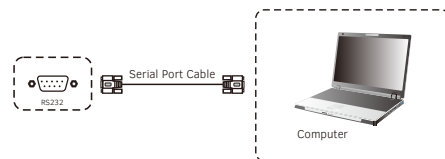
	Press to boot or turn off the display. Press and hold for three seconds to shut down the product.
USB	USB Port for both Android and Windows OS.

MAXHUB

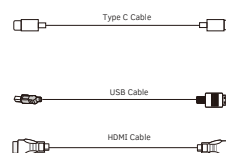
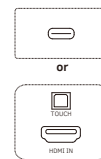
IV. Frequently Connected Ports



NOTICE: The terms HDMI and HDMI High-Definition Multimedia Interface, and the HDMI Logo are trademarks or registered trademarks of HDMI Licensing LLC in the United States and other countries.



MAXHUB

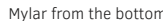


V. Setup the Wireless Module

Please make sure that the following items are ready before setting up the wireless module

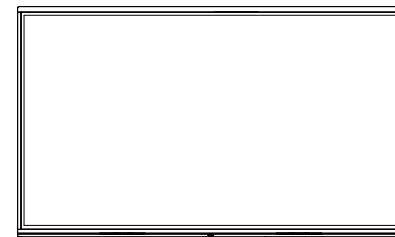
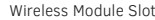
1×Interactive Flat Panel
1×Wireless Module SI06
2×Screws (CM3×6mm, Black)

Step 1: Remove the Mylar on the bottom of the interactive flat panel.



Step 2: Insert the wireless module SI06 into the wireless module slot and screw it up.

MAXHUB



Now, we are ready to go with all the wireless features.

VI. Maintenance

Keeping the product from dust and moisture help prevent unexpected failures. Please clean the product regularly with a soft, dustless, dry cloth. Make sure to unplug the product before cleaning.

Cleaning the Screen

1. Please dissolve the fabric softener or detergent in 75% alcohol.
2. Please use a piece of soft cloth and soak it with the solution.
3. Take out the cloth and squeeze it dry before wiping on the screen.
4. Please do NOT drop the solution to the product onto other components of the product.

Cleaning the Touch Frame

Please choose dry, soft and dust-free wipes to clean the touch frame.

Unplug Power

During stormy season or when you are NOT going to use the device for long time, please unplug the power.

MAXHUB