

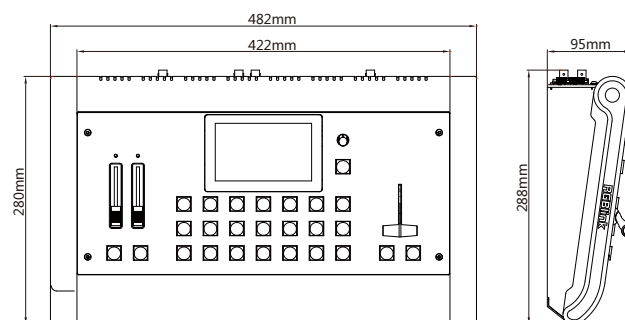
Specifications

Connectors	Input	1 slots up to 4 single inputs , select from	
		DVI Module	1 x DVI-I (supports DVI,VGA,YPbPr,CVBS)
		HDMI Module	1 x HDMI-A
		SDI Module	2 x BNC (1 In 1 Loop)
		USB Module	2 x USB (1 In 1 Backup)
	NDI Module	1 x RJ45	
	Output	1 slot,select from	
		With SDI	2 x HDMI-A 1 x BNC
		Without SDI	2 x HDMI-A
		With USB 3.0/SDI	2xHDMI-A 1xBNC 1xUSB-A
With USB 3.0 without SDI		2xHDMI-A 1xUSB-A	
Audio	IN L/R	2 x RCA	
	OUT L/R	2 x RCA	
	OUT	1x3.5mm Stero Jack	
Communication	LAN	1 x RJ45	
	Tally	1 x DB15	
	USB	1 x USB Type B	
Power	Genlock Y	1 x BNC	
		1 x IEC	
Performance	Input Resolution	SDI	
		SMPTE	480i 576i 720p@50/60 1080i@59.94/60 1080p@23.98/24/25/29.97/30/59/59.94/60
		DVI HDMI	
		SMPTE	480i 576i 720p@50/59.94/60 1080i@50/59.94/60 1080p@50/59.94/60
	Output Resolution	Select from below or customized	
		SDI	
		SMPTE	480i 576i 720p@50/59.94/60 1080i@50/59.94/60 1080p@50/59.94/60
		HDMI	
	Supported Standards	SMPTE	720p @50/59.94/60 1080p@50/59.94/60
		VESA	1024x768@60 1280x720@60 1280x1024@60 1360x768@60 1920x1080@60
USB 3.0 (follow HDMI)		1024x768@60 1280x720@60 1280x1024@60 1360x768@60 1920x1080@60	
SDI		SMPTE 425M (Level A & B) SMPTE 424M SMPTE 292M SMPTE 259M-C DVB-ASI	
Features	Layers	2	
	MASK Edit	Support	
	Brightness	Standard range	
	EDID Management	Yes	
Power	Input Voltage	AC 85V-264V, 50/60Hz	
	Max Power	120W	
Environment	Temperature	0- 55°C	
	Humidity	10%-90%	
Physical	Weight	Net weight	5.5Kg
		Package	8kg
	Dimensions	Net weight	462mmx280mmx95mm
		Package	585mmx410mmx205mm

Order Codes

Product Code	Item
220-0001-01-0	M1
220-0001-04-0	M1 (Support Rack Mounting)
290-0001-01-0	Output Module PGM HDMI/SDI PVW HDMI
290-0001-02-0	Output Module PGM HDMI PVW HDMI (Standard)
290-0001-03-0	Output Module PGM HDMI/SDI/USB 3.0 PVW HDMI
290-0001-05-0	Output Module PGM HDMI/USB 3.0 PVW HDMI
190-0001-04-2	Single DVI Input Module
190-0001-07-2	Single 3G-SDI Input/Loop Module
290-0001-08-2	Single NDI Input Module
190-0001-10-2	Single USB2.0 Input/Backup Module
190-0001-13-2	Single HDMI Input Module
930-0002-01-0	Wings/Sidesfor M1 (Pair)
930-0002-02-0	Rack for M1

Dimensions



**Mobile +
Mixed Signal Streaming from Anywhere to Everywhere**

RGBlink®

WEB: www.rgblink.com EMAIL: sales@rgblink.com PHONE: +86 592 5771197
Proudly designed and manufactured in Xiamen Hi Technology Zone, China

RGBlink®



www.rgblink.com



Fully integrated video scaling and mixing for everyday

A complete solution, simply connect M1 to any display and start presenting. Front panel console style controls together touch screen display make M1 intuitive and natural in use, even for the new operator.

More than just a video mixer, M1 allows full scaled output to modern displays without to additional equipment. For stage/conference presentations on board features including PIP (picture-in-picture) add powerful capabilities to make use of additional video sources including cameras;

While compact in size, M1 brings together essential features for small presentation environments, including audio mix features allowing connection to audio mixers or powered speakers.

Features

- Up to 4 different input signal modulators can be installed at the same time
- Four modular user fit inputs
- Single channel output on HDMI (optionally SDI)
- Resolution independent configurable output
- Dedicated Multi-View Preview
- Picture in Picture with DSK & Mask effects
- Digital video transition effects
- Pixel-to-pixel scaling engine
- Digital stereo audio processing
- Support for external audio insert and output
- Genlock Y In
- Remote control via XPOSE mobile app
- OTG Streaming with TAO installed on Android mobile device

NDI Decoding

M1 is equipped with NDI decoding module, which supports up to 4 Gigabit NDI network ports, which can realize high-quality, low-latency, long-distance transmission applications up to NDI | HX2.



Dedicated Preview

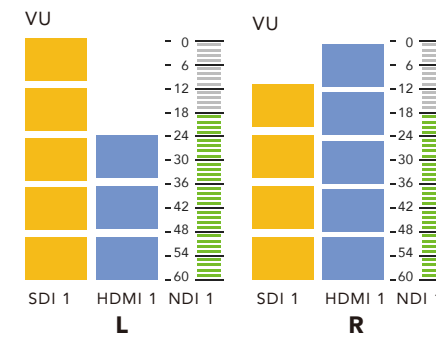
A dedicated HDMI output with multi-view is provided from which both PGM and PST can be monitored,

along with input sources and audio levels.



External display

Bundle with Mobile more than an External Monitor
Android Pad | Phone with OTG, works with TAO, not only as an external monitor, but also streaming encoder without PC engagement.



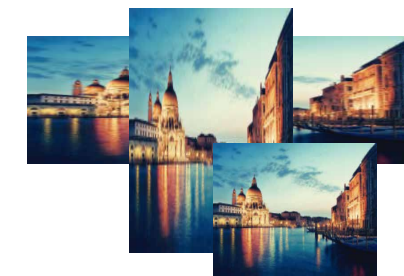
Mixed Audio

Both embedded and insert audio are supported with separate left/right audio level controls available on the front panel. Audio may be selected independently from the video source. PPM monitoring maybe shown on the PVW as visual confirmation of source and output.



Digital Effects

The PIP may have an effect applied – options include masks (with a range built in as well as support for custom masks), DSK/Chroma Key to remove a background colour and variable edge blend, as soften effect to allowing the PIP to merged with the main image.



Transition Effects

There are over a dozen transition effects and wipes built into M1. These maybe used via the T-bar or timed from the TAKE button.



Visual Enhancements

Apply a range of visual effects and enhancements with fine grain controls may be utilised for each input. Controls include brightness, contrast, saturation, sharpness and color temperature.



Video Mixing

M1 vision mixer style control panel provides a range of tactile controls including familiar T-Bar and large illuminated buttons for easy of operation.

Modular by Design

Each input is individual and are user fit – choose from a wide range of modular signal options. Modules are highly standardised across the RGBlink range for event greater flexibility.

Input options include HDMI, DVI, SDI, CVBS, USB and NDI more.

Output options are HDMI or HDMI|SDI|USB 3.0 .



*shown with optional input and output modules, support structure for mibile devices are optional, need to order separately – refer specification and options.